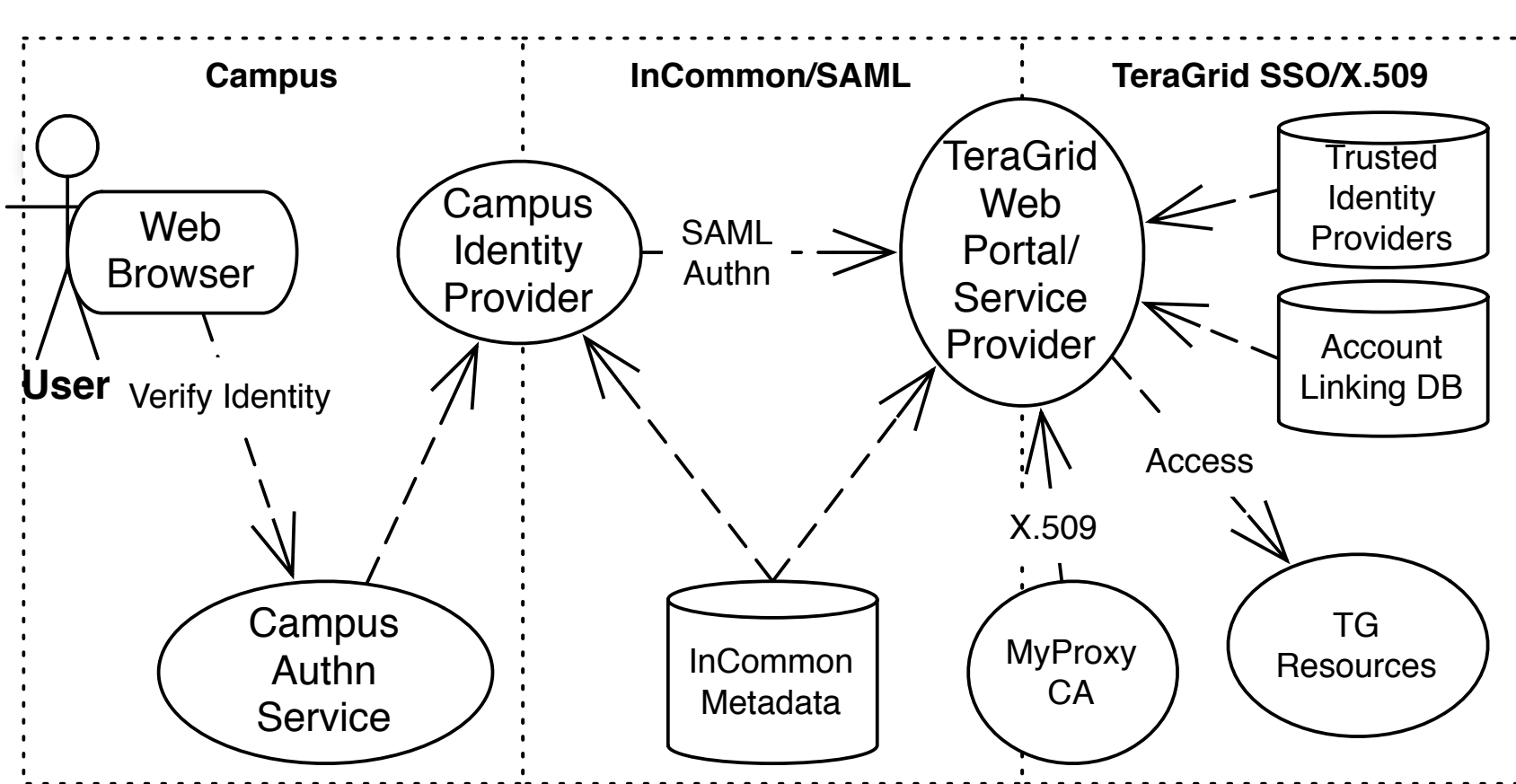
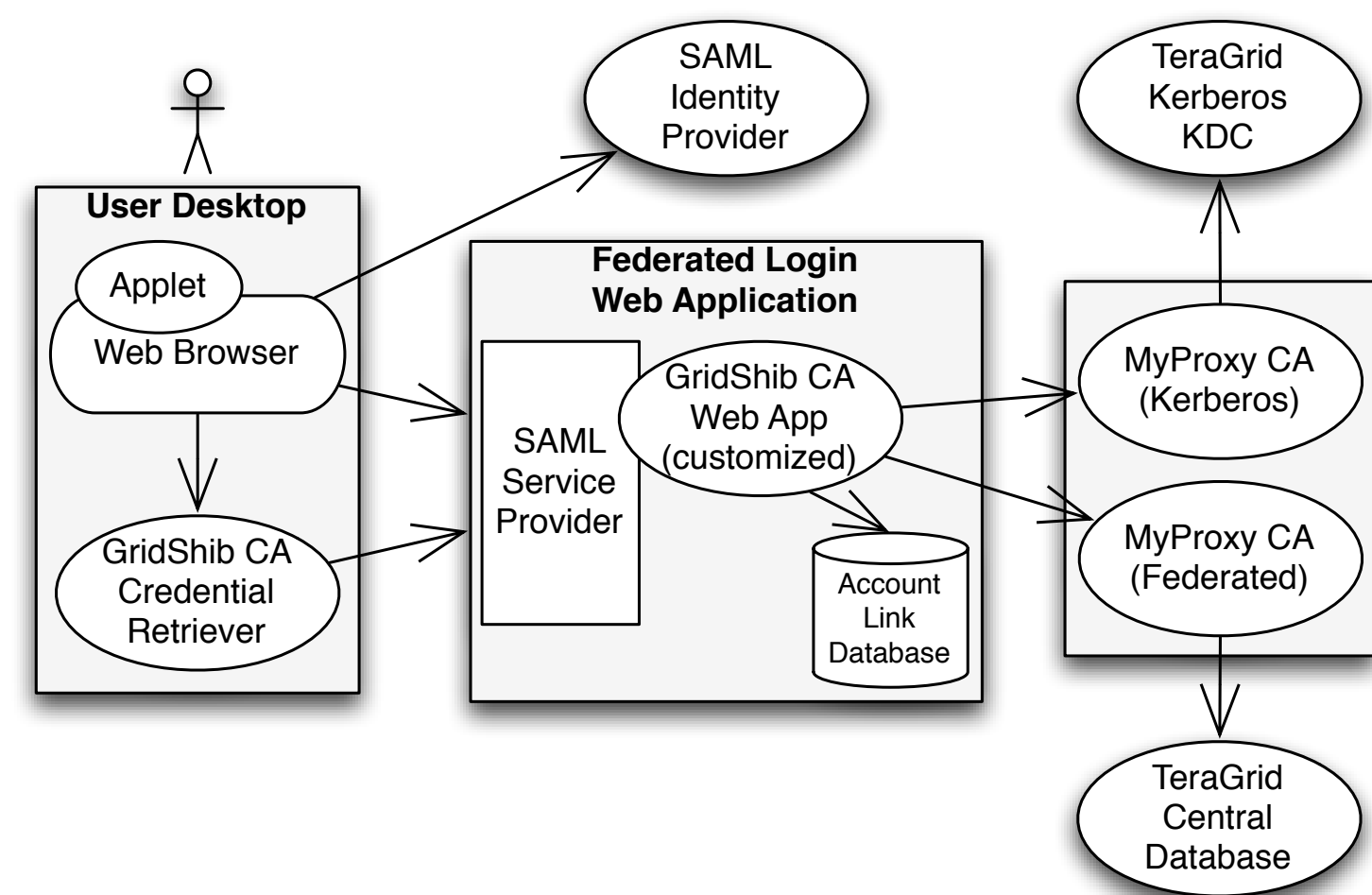


Federated Logon to TeraGrid

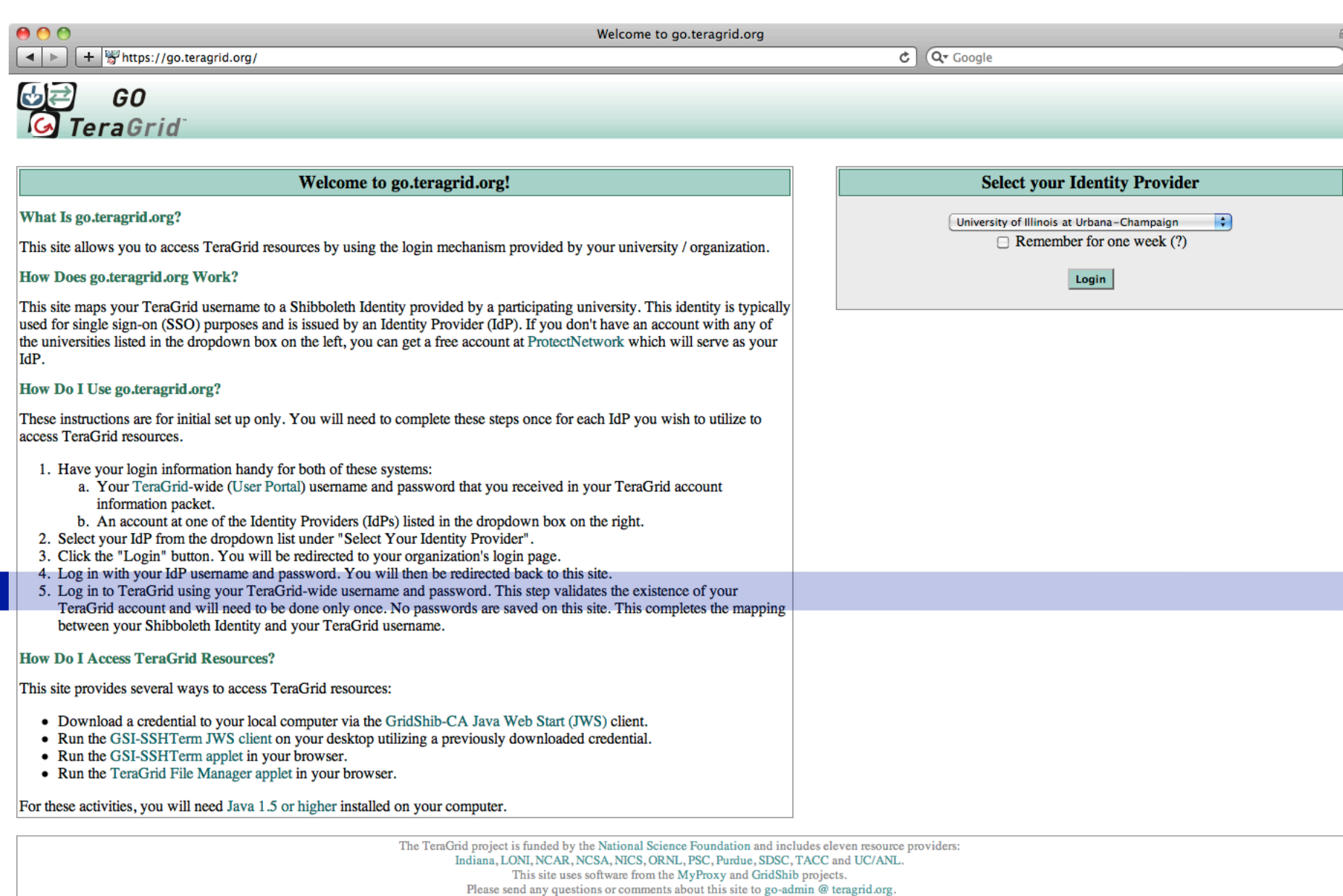
<https://go.teragrid.org>



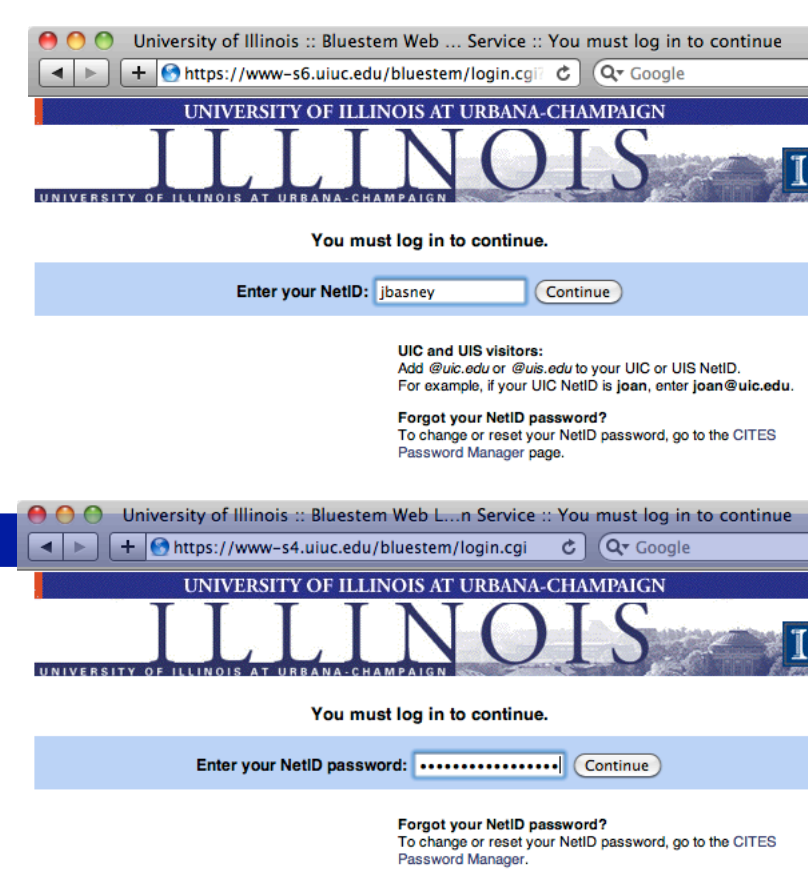
Federated logon to TeraGrid relies on translation of credentials between the campus domain, InCommon, and the TeraGrid single sign-on system.



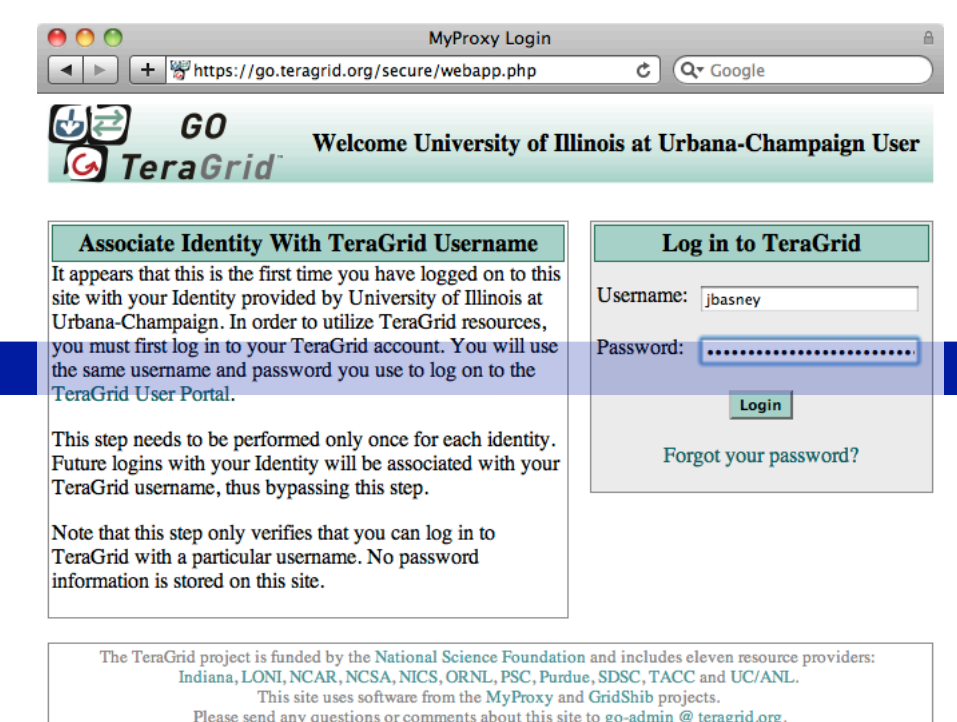
The TeraGrid federated logon system provides certificates, issued by a MyProxy CA, for web and desktop applications. The web application binds campus identities to TeraGrid identities via an account-link database.



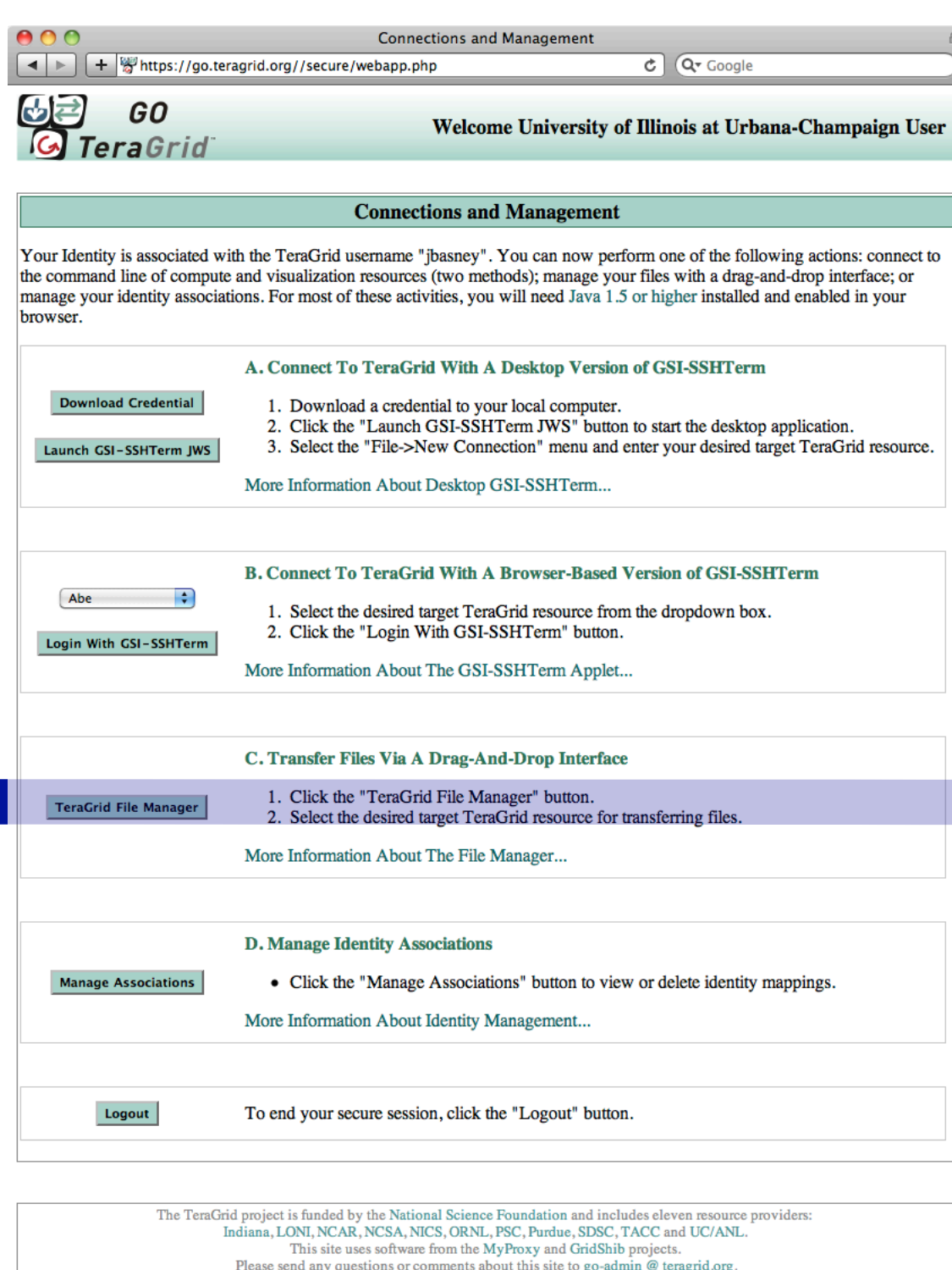
First the researcher visits the home page and selects his or her campus from the identity provider list. In case the researcher's campus is not available, he or she can login via ProtectNetwork.



Next the researcher logs in at the campus login page (ex. University of Illinois).

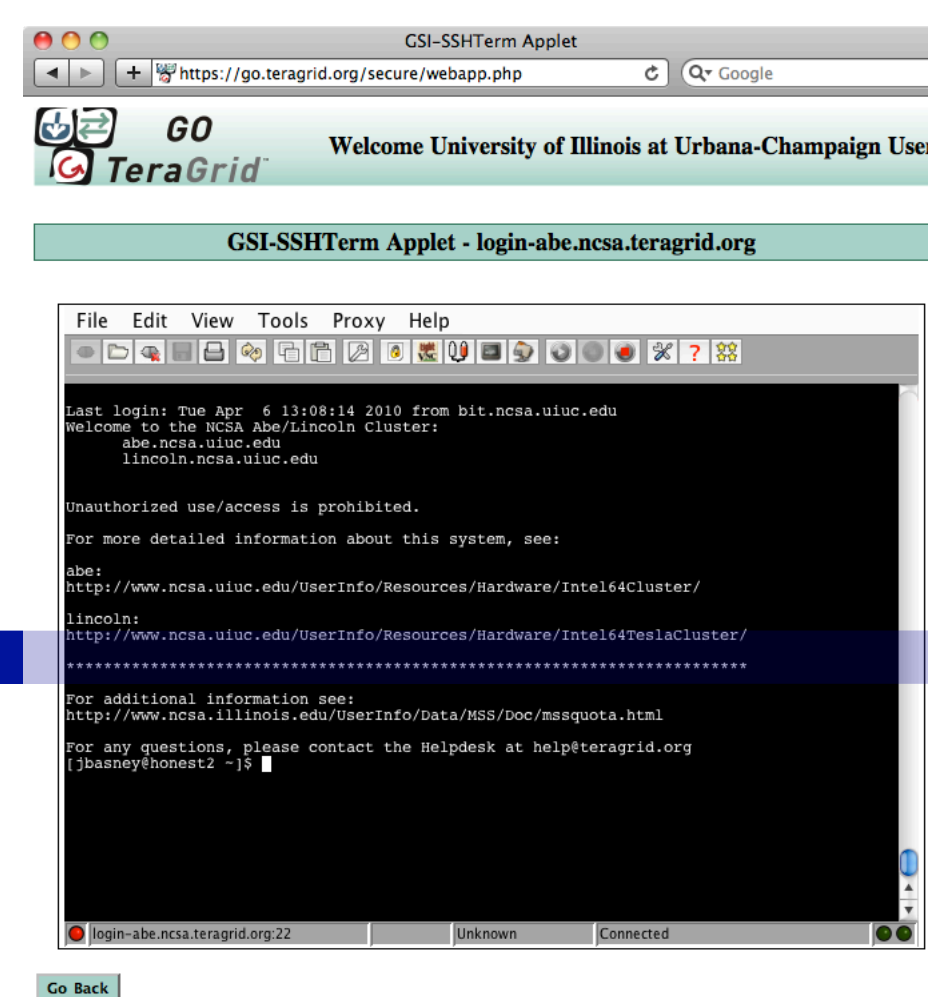
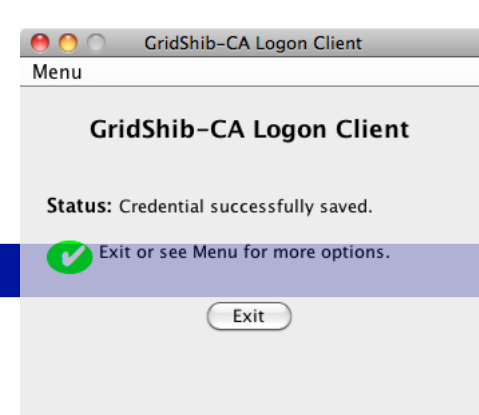


Then, the researcher logs in to TeraGrid to bind the campus and TeraGrid identities. This is a one-time-only operation.

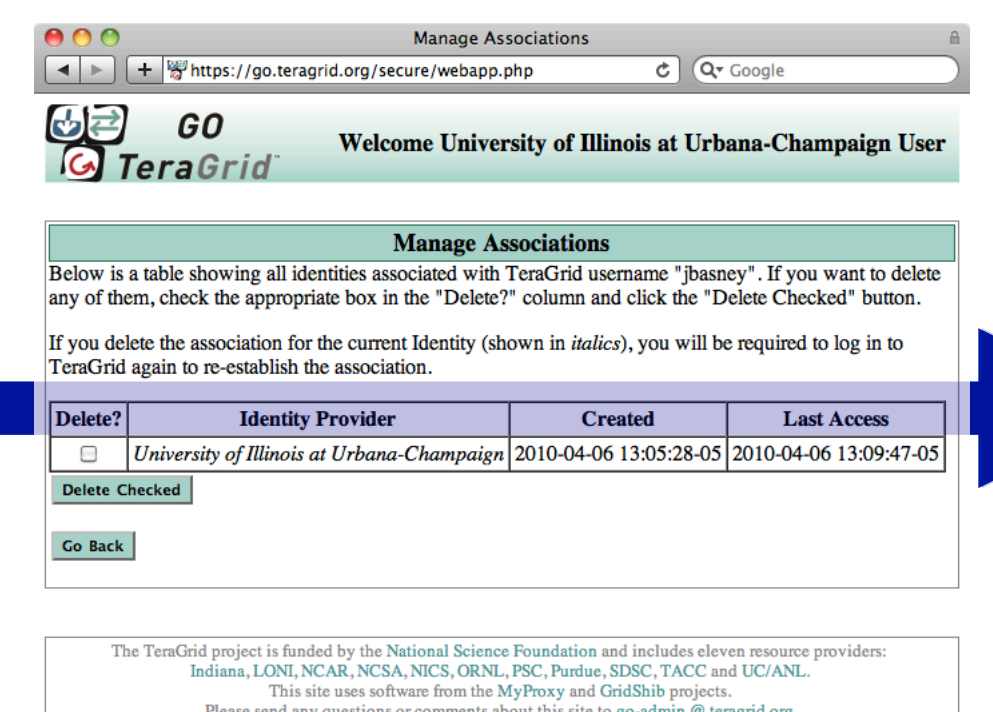


After login, the site presents the researcher with options to download a certificate to the desktop or launch Java applets for remote login and file transfer using the certificate for authentication.

Choosing to download a credential to the desktop launches a simple Java Web Start application (from the GridShib project) to generate a keypair, issue a certificate request to the server, receive a signed certificate in return, and store them to the desktop.



The GSI-SSHTerm Applet supports remote login via the browser, including X11 forwarding.



The researcher can view and delete identity bindings via the web interface.



ILLINOIS
UNIVERSITY OF ILLINOIS AT URBANA-CHAMPAIGN

