



InCommon and TeraGrid Campus Champions

Jim Basney

jbasney@ncsa.uiuc.edu



National Center for Supercomputing Applications
University of Illinois at Urbana-Champaign

Outline

- InCommon Overview
- TeraGrid and InCommon
- InCommon and NSF CyberInfrastructure

InCommon Overview

InCommon Federation

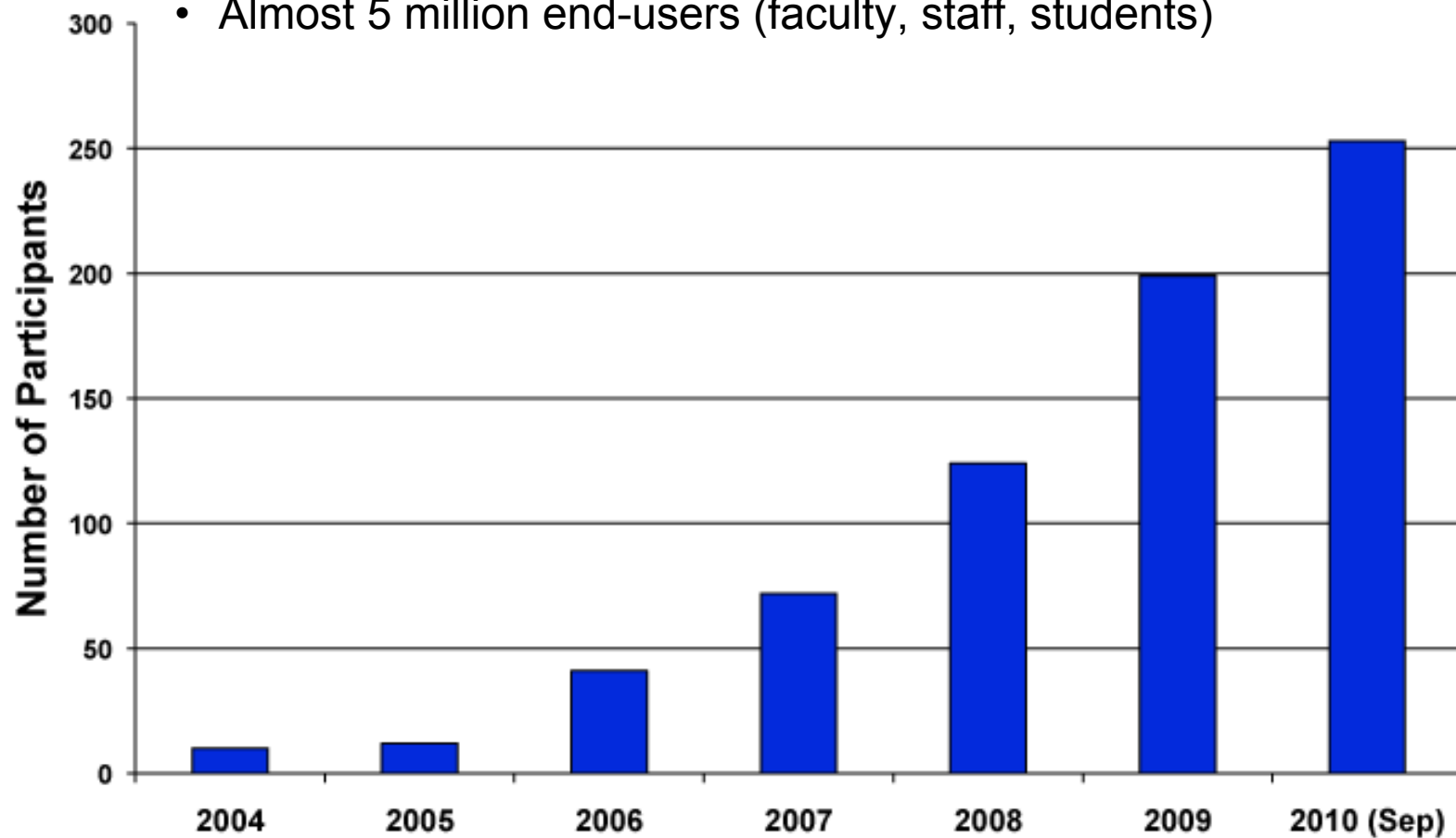
InCommon is the federation for U.S. research and education, providing higher education and their commercial and non-profit partners with a common trust framework for access to online resources.

About InCommon

- Through InCommon, campuses leverage their identity databases to allow for the use of one set of credentials to access multiple resources.
- Online service providers no longer need to maintain user accounts.
- Identity providers manage the levels of their users' privacy and information exchange.
- InCommon uses SAML-based authentication and authorization systems (such as Shibboleth®) to enable scalable, trusted collaborations among its community of participants.

InCommon Participants Year-by-Year

- 253 InCommon Participants (Sept. 2010)
- Almost 5 million end-users (faculty, staff, students)



- [Join InCommon](#)
- [Participants](#)
- [IAM Online](#)
- [Education and Training](#)
- [Affiliates](#)
- [Certificate Service](#)
- [Policies and Practices](#)
- [Technical Information](#)
- [Software Guide](#)
- [Metadata and WAYF](#)
- [Site Administrator Info](#)
- [Frequently Asked Questions](#)
- [Benefits](#)
- [Site Administrator Login](#)
- [Collaboration Wiki](#)
- [Glossary](#)
- [Contact Us](#)
- [About](#)

Current InCommon Participants

A community of more than **4.5 million end users**.

(Source: Higher Education Students, Faculty, and Staff, Integrated Postsecondary Education Data System. Calculated April 2010.)

| Higher Education Participants (180) | Government and Nonprofit Laboratories, Research Centers, and Agencies (7) | Sponsored Partners (66) |
|--|---|---|
| <ul style="list-style-type: none"> American University Arizona State University Augsburg College Baylor University Brown University California Institute of Technology California Maritime Academy California Polytechnic State University, San Luis Obispo California State Polytechnic University, Pomona California State University, Bakersfield California State University, Channel Islands | <ul style="list-style-type: none"> Argonne National Laboratory Energy Sciences Network (ESNet) Lawrence Berkeley National Laboratory Moss Landing Marine Laboratories National Institutes of Health National Science Foundation TeraGrid | <ul style="list-style-type: none"> Absolute Software, Inc. ALEKS Corporation Alexander Street Press Apple - iTunes U Atlas Systems, Inc. BioOne, Inc. Blatant Media Corporation Burton Group Cambridge University Press Cayuse, Inc. Cengage Learning, Inc. Colorado Alliance of Research Libraries CSO Research, Inc. Davie County Schools |

Federated Resources

Resources available via InCommon are many and diverse

Business Functions

- Benefits
- Asset management
- Talent management
- Visas & INS compliance
- Mobile alerts
- Travel management
- Energy management
- Surveys and market analysis

Learning and Research

- Journals
- Databases and analytical tools
- Multi-media access
- Homework labs
- Quiz tools
- Plagiarism detection
- Software downloading
- Alcohol awareness education
- Student travel discounts
- Transportation and ride-share services.

Strong support from key higher education partners, such as: Microsoft, Apple, National Student Clearinghouse, NSF, NIH, Gov-affiliated Labs

TeraGrid and InCommon



Welcome to go.teragrid.org!

What Is go.teragrid.org?

This site allows you to access TeraGrid resources by using the login mechanism provided by your university / organization.

How Does go.teragrid.org Work?

This site maps your TeraGrid username to a Shibboleth Identity provided by a participating university. This identity is typically used for single sign-on (SSO) purposes and is issued by an Identity Provider (IdP). If you don't have an account with any of the universities listed in the dropdown box on the left, you can get a free account at [ProtectNetwork](#) which will serve as your IdP.

How Do I Use go.teragrid.org?

These instructions are for initial set up only. You will need to complete these steps once for each IdP you wish to utilize to access TeraGrid resources.

1. Have your login information handy for both of these systems:
 - a. Your TeraGrid-wide ([User Portal](#)) username and password that you received in your TeraGrid account information packet.
 - b. An account at one of the Identity Providers (IdPs) listed in the dropdown box on the right.
2. Select your IdP from the dropdown list under "Select Your Identity Provider".
3. Click the "Login" button. You will be redirected to your organization's login page.
4. Log in with your IdP username and password. You will then be redirected back to this site.
5. Log in to TeraGrid using your TeraGrid-wide username and password. This step validates the existence of your TeraGrid account and will need to be done only once. No passwords are saved on this site. This completes the mapping between your Shibboleth Identity and your TeraGrid username.

How Do I Access TeraGrid Resources?

This site provides several ways to access TeraGrid resources:

- Download a credential to your local computer via the [GridShib-CA Java Web Start \(JWS\)](#) client.
- Run the [GSI-SSHTerm JWS client](#) on your desktop utilizing a previously downloaded credential.
- Run the [GSI-SSHTerm applet](#) in your browser.
- Run the [TeraGrid File Manager applet](#) in your browser.

For these activities, you will need [Java 1.5](#) or higher installed on your computer.

Select your Identity Provider

University of Illinois at Urbana-Champaign

Remember for one week (?)

Login

The TeraGrid project is funded by the [National Science Foundation](#) and includes eleven resource providers: Indiana, LONI, NCAR, NCSA, NICS, ORNL, PSC, Purdue, SDSC, TACC and UC/ANL.
This site uses software from the [MyProxy](#) and [GridShib](#) projects.
Please send any questions or comments about this site to go-admin@teragrid.org.



You must log in to continue.

Enter your NetID:

UIC and UIS visitors:
Add @uic.edu or @uis.edu to your UIC or UIS NetID.
For example, if your UIC NetID is joan, enter joan@uic.edu.

Forgot your NetID password?
To change or reset your NetID password, go to the CITES Password Manager page.

More Information

Where to Get Help

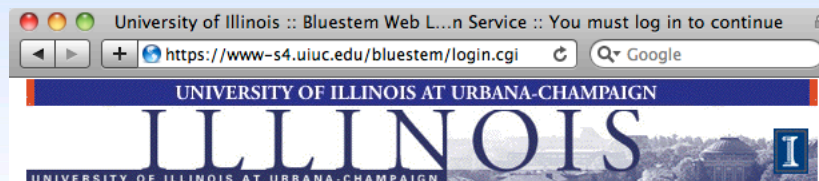
- **Urbana campus:** Contact the CITES Help Desk at consult@illinois.edu
- **Chicago campus:** Contact ACCC at (312) 413-0003 or consult@uic.edu
- **Springfield campus:** Contact Information Technology Services at 217-206-6000 or techsupport@uis.edu

What is a NetID?

Your NetID serves as your login to many University computing and networking services and also determines your University email address, which is netid@illinois.edu.

For more information, see the [Your Network ID \(NetID\)](#) page.

CITES Help Desk - consult@uiuc.edu



You must log in to continue.

Enter your NetID password:

Forgot your NetID password?
To change or reset your NetID password, go to the CITES Password Manager.

More Information

To maximize security, quit your browser when done using this application.

Where to Get Help

- **Urbana campus:** Contact the CITES Help Desk at consult@illinois.edu
- **Chicago campus:** Contact ACCC at (312) 413-0003 or consult@uic.edu
- **Springfield campus:** Contact Information Technology Services at 217-206-6000 or techsupport@uis.edu

Technical Information

The only servers authorized to ask for your NetID password are this page and the CITES Password Manager at passwords.cites.uiuc.edu.

This login service uses the following servers:

- www-s4.uiuc.edu
- www-s5.uiuc.edu
- www-s6.uiuc.edu
- www-s3.uiuc.edu

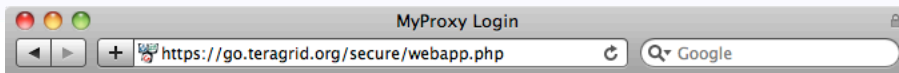
This page's URL should start with <https://> followed by one of the servers listed above.

Report the URL of any other server that asks for your NetID password to the CITES Help Desk at consult@illinois.edu.

For most web browsers, the security padlock icon for this page should be closed/locked.



CITES Help Desk - consult@illinois.edu



Associate Identity With TeraGrid Username

It appears that this is the first time you have logged on to this site with your Identity provided by University of Illinois at Urbana-Champaign. In order to utilize TeraGrid resources, you must first log in to your TeraGrid account. You will use the same username and password you use to log on to the TeraGrid User Portal.

This step needs to be performed only once for each identity. Future logins with your Identity will be associated with your TeraGrid username, thus bypassing this step.

Note that this step only verifies that you can log in to TeraGrid with a particular username. No password information is stored on this site.

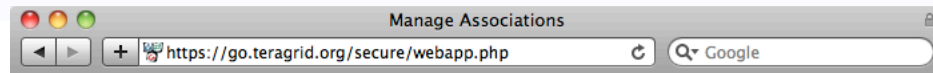
Log in to TeraGrid

Username:

Password:

[Forgot your password?](#)

The TeraGrid project is funded by the National Science Foundation and includes eleven resource providers: Indiana, LONI, NCAR, NCSA, NICS, ORNL, PSC, Purdue, SDSC, TACC and UC/ANL.
This site uses software from the MyProxy and GridShib projects.
Please send any questions or comments about this site to go-admin@teragrid.org.



Manage Associations

Below is a table showing all identities associated with TeraGrid username "jbasney". If you want to delete any of them, check the appropriate box in the "Delete?" column and click the "Delete Checked" button.

If you delete the association for the current Identity (shown in *italics*), you will be required to log in to TeraGrid again to re-establish the association.

| Delete? | Identity Provider | Created | Last Access |
|--------------------------|---|------------------------|------------------------|
| <input type="checkbox"/> | <i>University of Illinois at Urbana-Champaign</i> | 2010-04-06 13:05:28-05 | 2010-04-06 13:09:47-05 |

The TeraGrid project is funded by the National Science Foundation and includes eleven resource providers: Indiana, LONI, NCAR, NCSA, NICS, ORNL, PSC, Purdue, SDSC, TACC and UC/ANL.
This site uses software from the MyProxy and GridShib projects.
Please send any questions or comments about this site to go-admin@teragrid.org.

(one-time only)

Connections and Management

https://go.teragrid.org//secure/webapp.php

GO
TeraGrid

Welcome University of Illinois at Urbana-Champaign User

Connections and Management

Your Identity is associated with the TeraGrid username "jbasney". You can now perform one of the following actions: connect to the command line of compute and visualization resources (two methods); manage your files with a drag-and-drop interface; or manage your identity associations. For most of these activities, you will need [Java 1.5 or higher](#) installed and enabled in your browser.

A. Connect To TeraGrid With A Desktop Version of GSI-SSHTerm

[Download Credential](#)

[Launch GSI-SSHTerm JWS](#)

1. Download a credential to your local computer.
2. Click the "Launch GSI-SSHTerm JWS" button to start the desktop application.
3. Select the "File->New Connection" menu and enter your desired target TeraGrid resource.

[More Information About Desktop GSI-SSHTerm...](#)

B. Connect To TeraGrid With A Browser-Based Version of GSI-SSHTerm

[Login With GSI-SSHTerm](#)

1. Select the desired target TeraGrid resource from the dropdown box.
2. Click the "Login With GSI-SSHTerm" button.

[More Information About The GSI-SSHTerm Applet...](#)

C. Transfer Files Via A Drag-And-Drop Interface

[TeraGrid File Manager](#)

1. Click the "TeraGrid File Manager" button.
2. Select the desired target TeraGrid resource for transferring files.

[More Information About The File Manager...](#)

D. Manage Identity Associations

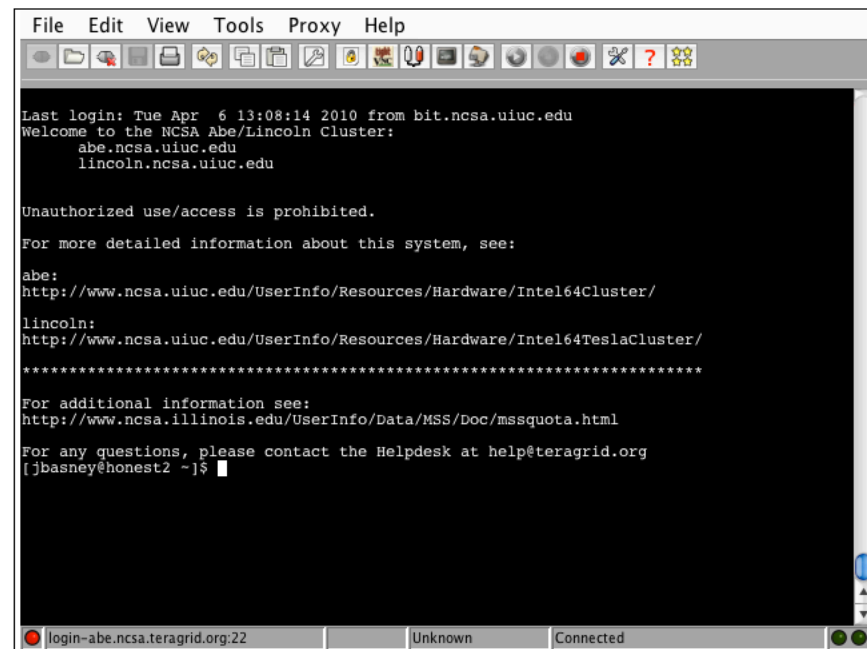
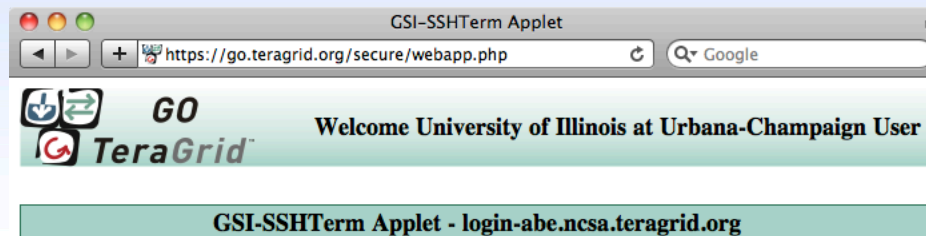
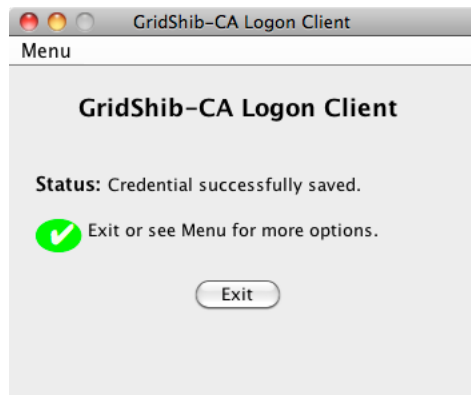
[Manage Associations](#)

- Click the "Manage Associations" button to view or delete identity mappings.

[More Information About Identity Management...](#)

[Logout](#)

To end your secure session, click the "Logout" button.



[Go Back](#)

The TeraGrid project is funded by the National Science Foundation and includes eleven resource providers: Indiana, LONI, NCAR, NCSA, NICS, ORNL, PSC, Purdue, SDSC, TACC and UC/ANL. This site uses software from the MyProxy and GridShib projects. Please send any questions or comments about this site to go-admin@teragrid.org.


TeraGrid InCommon Support: Status

- Available at <https://go.teragrid.org> since Sep 2009
 - Supporting logins from >30 institutions
 - Issued >1000 certificates so far
- Work in progress:
 - Integrate with TeraGrid User Portal (<https://portal.teragrid.org>)
 - CILogon Project (<https://cilogon.org>)
 - Provide certificates to all InCommon members (not just TeraGrid users)
- Other possible future work for TeraGrid:
 - Phase out TeraGrid passwords
 - Attribute-based authorization
 - Support for OpenID

InCommon and NSF CyberInfrastructure

New Service: cilogon.org

- No TeraGrid account required
- Delivers certificates to desktop or browser
- Available certificate lifetimes: from 1 hour to 13 months
- 3 Certification Authorities:
 - Silver: InCommon Silver IDs
 - Basic: any InCommon IDs
 - OpenID: any OpenIDs
- Available now!



The screenshot shows the CILogon Service website. The browser address bar displays "https://cilogon.org/". The page title is "Welcome To The CILogon Service". The main content area is divided into two columns. The left column, titled "About The CILogon Service", contains sections for "What is The CILogon Service?", "How Does The CILogon Service Work?", "How Do I Use The CILogon Service?", "What if I Don't See My Organization Listed?", "Can I Use OpenID Instead?", and "What if I Have More Questions?". The right column, titled "Start Here", contains a "Select An InCommon Organization:" dropdown menu with "University of Illinois at Urbana-Champaign" selected, a "Remember this selection:" checkbox, and a "Log On" button. Below the "Log On" button is a link for "Use OpenID Instead" and a note about privacy policy. At the bottom of the page, there is a small disclaimer about the service's funding and a link to the FAQ.



www.cilogon.org

Roadmap for using NSF CI with InCommon

- A practical guide under development now
 - Your input is desired!
- For current draft, visit:

<https://spaces.internet2.edu/display/nsfciinc>

Thanks!

- Questions? Comments?
- Contact: jbasney@illinois.edu